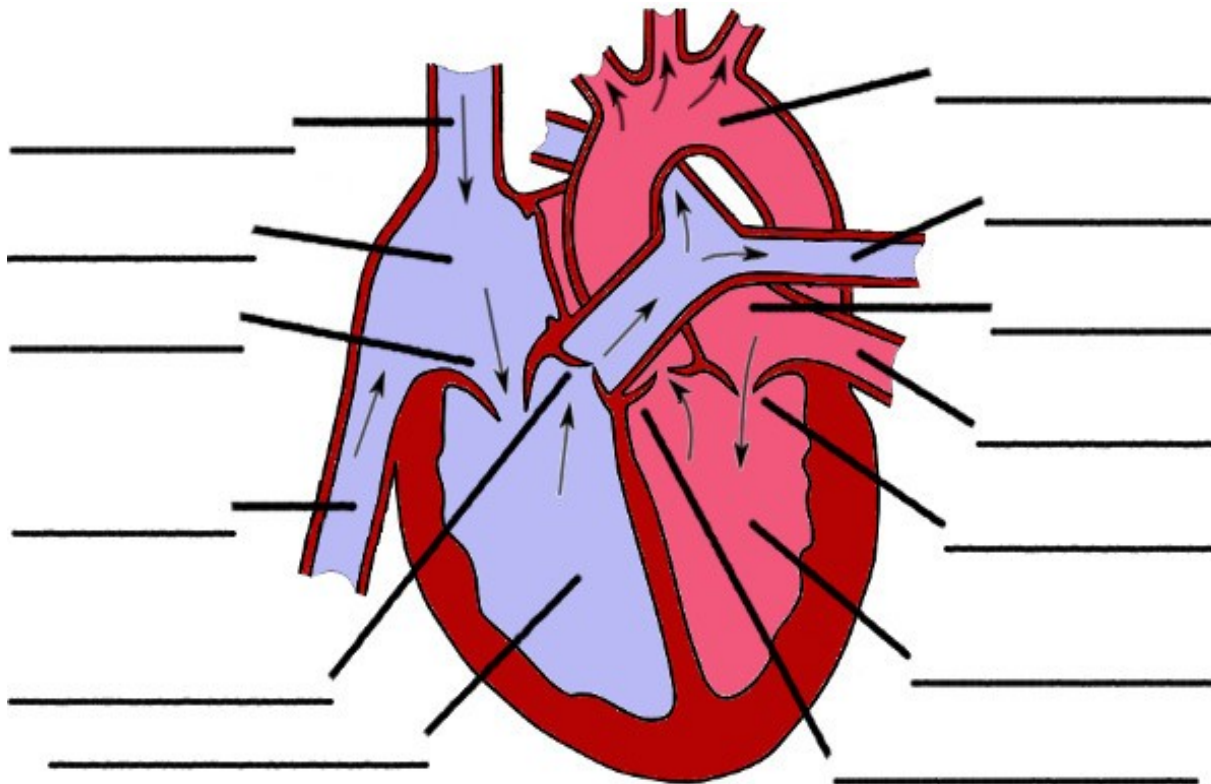


The human heart

The average human heart beats at 72 beats per minute, and for an average lifespan (66 years) it will beat for a total of approximately 2.5 billion times. It weighs approximately 250 to 300 grams (9 to 11 oz) in females and 300 to 350 grams (11 to 12 oz) in males.

Identify the parts of the heart in the diagram below, using the list to the right.



Choose from:

Aorta	Pulmonary valve
Aortic valve	Pulmonary veins
Inferior vena cava	Right atrium
Right ventricle	Superior vena cava
Left atrium	Tricuspid valve
Mitral valve	Left ventricle
Pulmonary arteries	