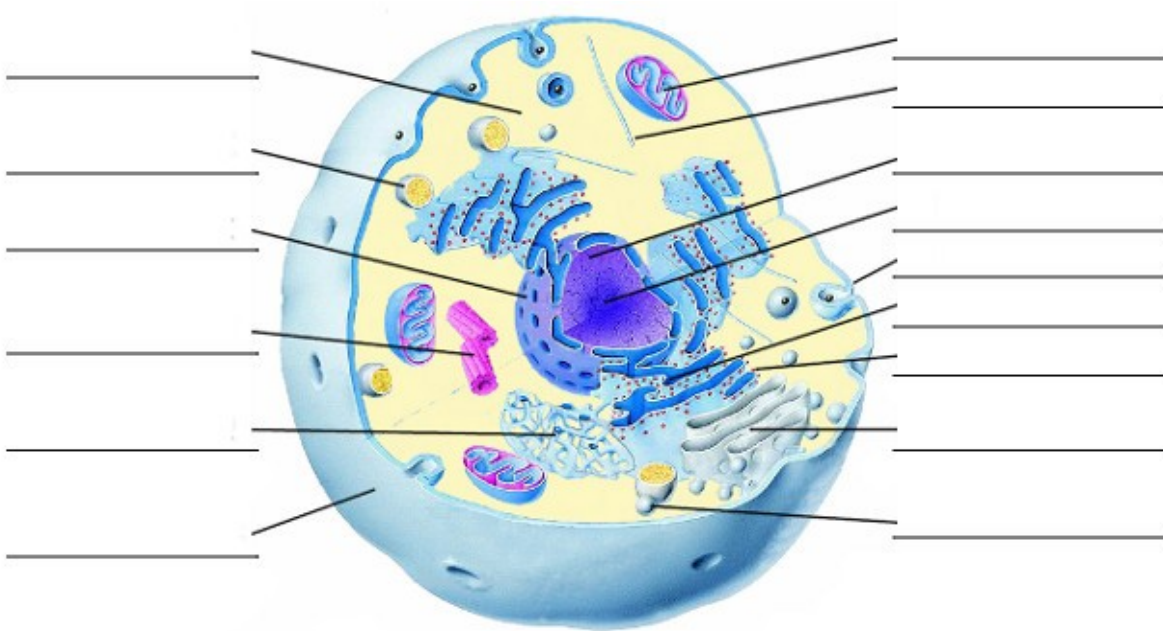


The Anatomy of the Cell

Identify the parts of the cell in the diagram below, using the list to the right.

Choose from:



Centrioles	Nucleus
Cytoplasm	Pinocytotic vesicles
Golgi complex	Plasma membrane
Lysosome	Ribosomes
Microfilament	Rough endoplasmic reticulum
Mitochondria	Smooth endoplasmic reticulum
Nuclear membrane	Vacuoles
Nucleolus	