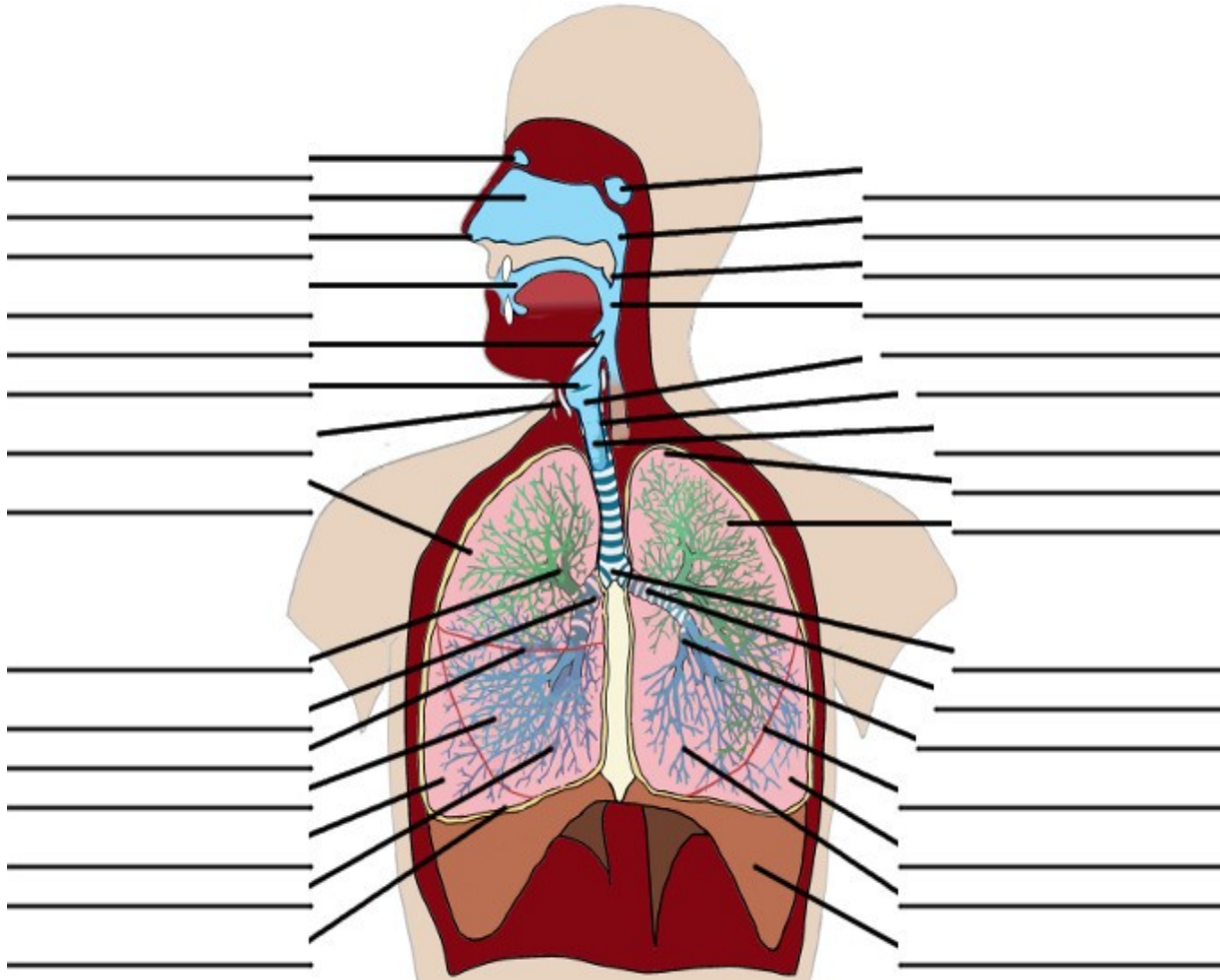


The Respiratory System

Identify the parts of the respiratory system in the diagram below, choosing from the list to the right.



Apex	Nasopharynx
Bronchiole (2)	Middle lobe
Carina	Oblique fissure
Cricoid cartilage	Oral cavity
Diaphragm	Oropharynx
Epiglottis	Pleura
Frontal sinus	Sphenoid sinus
Horizontal fissure	Superior lobe (2)
Inferior lobe	Right primary bronchus
Larynx	Right secondary bronchus
Left primary bronchus	Thyroid cartilage
Left secondary bronchus	Trachea
Nasal cavity	Uvula
Nasal vestibule	Vocal folds